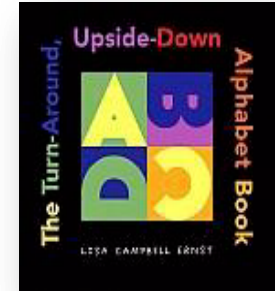


Alphabet Books & Children Who Read Them



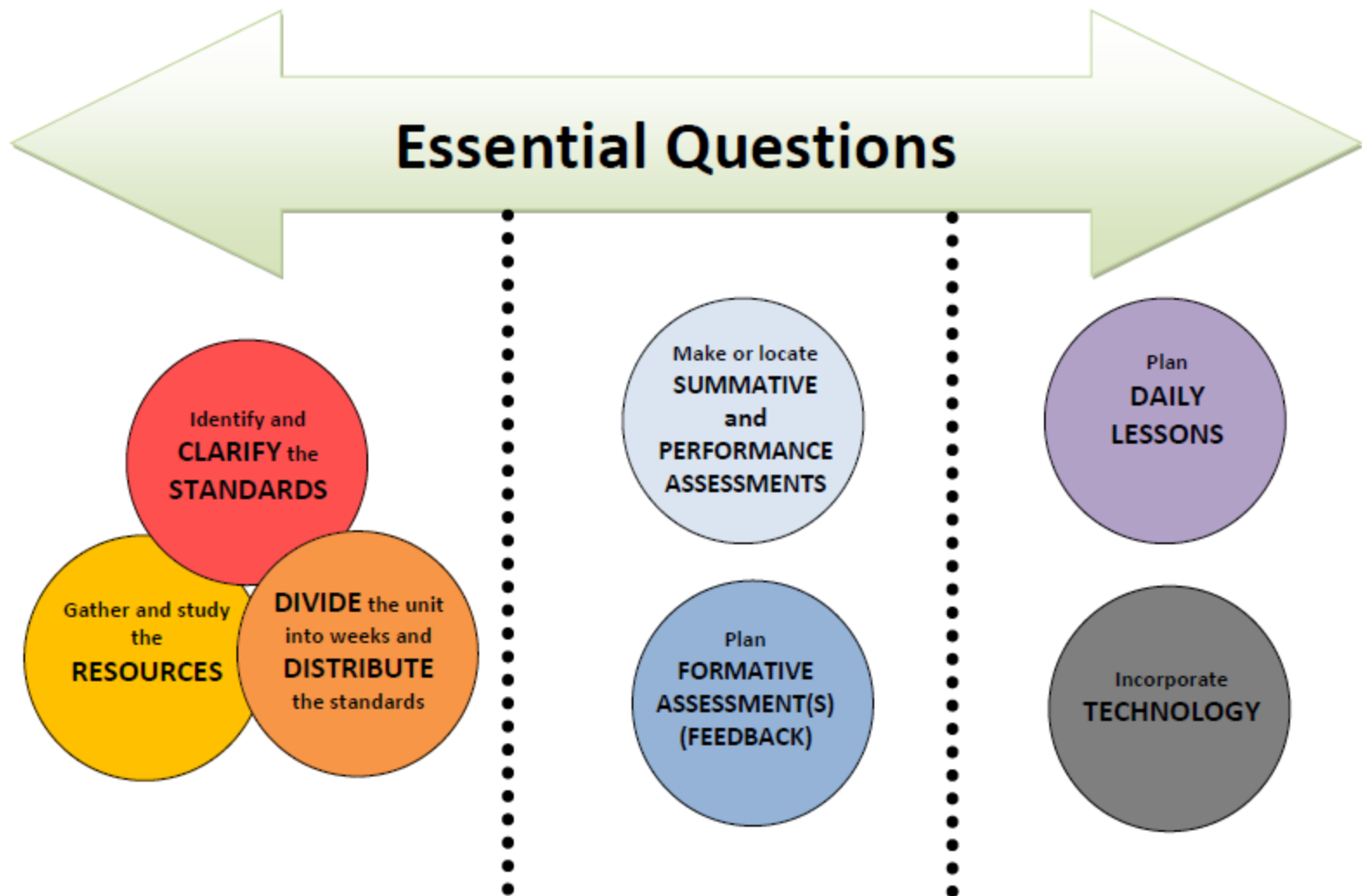
1st Grade Unit 1

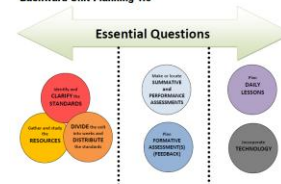


Unit Planning Team-

Lacey Anderson (JM), Jennifer Bradshaw (RG), Karla Buchholz (RG),
Trudy Cansler, Joy Jeffery (FT), Renee Simpson (JM)

Backward Unit Planning 1.0





Essential Questions

- 1. Why is it important to ask questions?**
- 2. How do we communicate our thoughts?**

Grade 1: Unit 1

Alphabet Books and Children Who Read Them

In this first six-week unit of first grade, students are welcomed to school as readers and begin reviewing the alphabet and concepts of print through books about the library, friendship, and the ABCs.

Overview

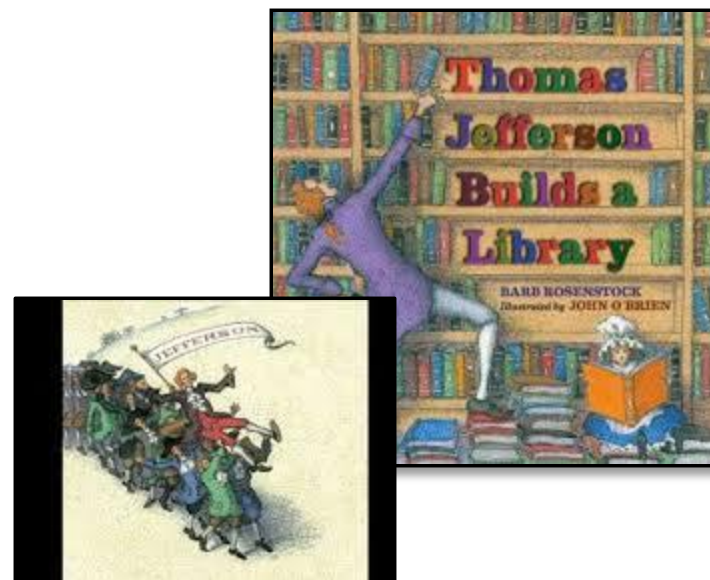
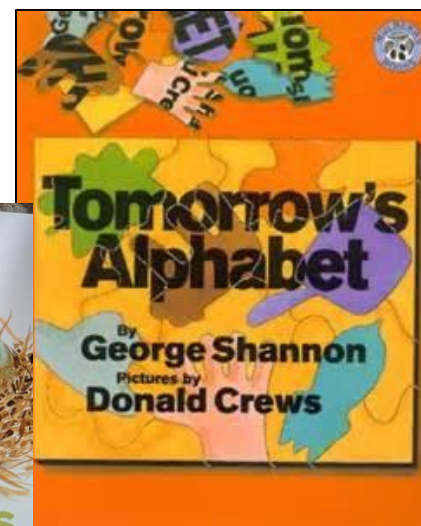
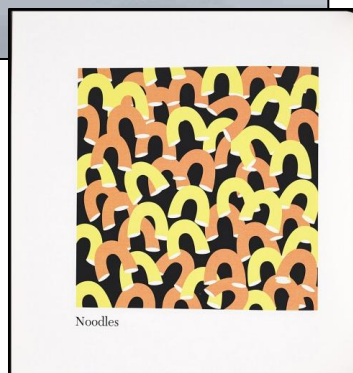
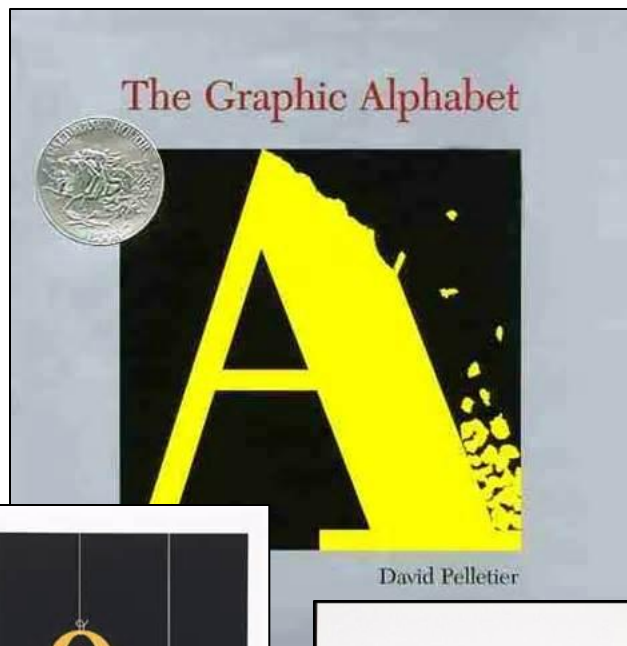
By conducting shared research, students learn that investigating is foundational to learning. By using books that require conversation, such as *The Graphic Alphabet*, students understand that ideas are processed through inquiry, thought, and conversation. After the students perform shared research based on a class question, they write a class ABC book about their topic. During this writing, they review the formation of a sentence with proper punctuation. Students respond to a question (prompt) to write what they know about healthy habits (e.g., exercise, healthy eating), focusing on their topic and supporting it with facts. Finally, they apply their knowledge of questioning to poetry and perform the poetry as a choral reading.

Essential Question



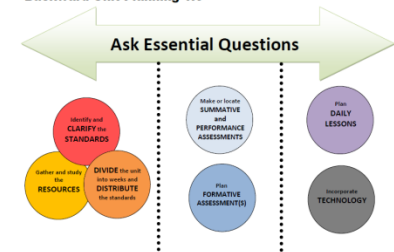
Why is it important to ask questions while you are reading?

New Texts



| Week | Standards | Texts |
|------|--|--|
| 1 | <ul style="list-style-type: none"> •Participate in collaborative conversations (SL.1.1) •Answer questions about text (RL.1.1) •Write a narrative with 2 events (W.1.3) |   <p>*Other back-to-school texts</p> |
| 2 | <ul style="list-style-type: none"> •Build on others' talk (SL.1.1b) •Ask & answer questions about text (RI/RL.1.1) •Write narratives with details (W.1.3) |     <p>"Children's Games"</p> |
| 3 | <ul style="list-style-type: none"> •Identify feeling words (RL.1.4) •Ask & answer questions to determine meanings of words (RI.1.4) •Write narratives with a sense of closure (W.1.3) |     |
| 4 | <ul style="list-style-type: none"> •Identify main topic of a text (RI.1.2) •Write informative texts, naming the topic & supply some facts (W.1.2) •Participate in shared research (W.1.7) |     |
| 5 | <ul style="list-style-type: none"> •Identify key ideas in a text (RI.1.7) •Use illustrations and details to describe key ideas (RI.1.7) •Focus on a topic (W.1.5) •Recall information from experiences (W.1.8) |    |
| 6 | <ul style="list-style-type: none"> •Explain major differences between stories and informational text (RL.1.5) •Compare & contrast experiences of characters (RL.1.9) •Participate in shared research (W.1.7) |    |

Backward Unit Planning 1.0



DIVIDE the unit
into weeks and
DISTRIBUTE
the standards

| Week | Standards | Essential Questions |
|------|--|--|
| 1 | <ul style="list-style-type: none"> •Participate in collaborative conversations (SL.1.1) •Answer questions about text (RL.1.1) •Write a narrative with 2 events (W.1.3) | |
| 2 | <ul style="list-style-type: none"> •Build on others' talk (SL.1.1b) •Ask & answer questions about text (RI/RL.1.1) •Write narratives with details (W.1.3) | |
| 3 | <ul style="list-style-type: none"> •Identify feeling words (RL.1.4) •Ask & answer questions to determine meanings of words (RI.1.4) •Write narratives with a sense of closure (W.1.3) | |
| 4 | <ul style="list-style-type: none"> •Identify main topic of a text (RI.1.2) •Write informative texts, naming the topic & supply some facts (W.1.2) •Participate in shared research (W.1.7) | “How do we communicate our thoughts?” |
| 5 | <ul style="list-style-type: none"> •Identify key ideas in a text (RI.1.7) •Use illustrations and details to describe key ideas (RI.1.7) •Focus on a topic (W.1.5) •Recall information from experiences (W.1.8) | |
| 6 | <ul style="list-style-type: none"> •Explain major differences between stories and informational text (RL.1.5) •Compare & contrast experiences of characters (RL.1.9) •Participate in shared research (W.1.7) | “Why is it important to ask questions?” |

